



PUCKLECHURCH NEWS

Issued weekly

Email: admin@pucklechurchprimary.org.uk

www.pucklechurchprimary.org.uk

18 October 2019

Issue 41

This has been a very busy week at school as we prepare for harvest next week. It is a delight to hear the children singing and seeing them work hard on preparing their poems/artwork. We hope that as many of you can come as possible. Due to the size of the church, we do ask if you are Key stage 2 parents, that you wait until the KS1 children/parents have left and the KS2 children have entered until you come in so that they have a chance to organise themselves. Thank you for your understanding with this.

We regularly have our SIA (School Improvement Advisor) come into school and spend time in lessons, looking at books and talking to the children. Ours came in this week and was very impressed with the quality of the learning taking place along with the presentation and quality of the books she saw. It was a real delight to hear the children talk to her about the range of subjects that they like in school along with the variety of the clubs they participate in. Thank you to all of the staff in the school who work tirelessly to make our school such a lovely place to be. We are incredibly proud of the children and how much progress they make both within their learning but also within their social and emotional development. Pucklechurch CEVC Primary is a wonderful place to be!

Have a wonderful weekend everyone!

Mrs Capel

Inset Days



Friday 25th October 2019
Monday 6th January 2020
Friday 22nd May 2020
Monday 20th July 2020

DIARY DATES

(to date- please do check these as, at times, they do change)

Term 1

23 Oct – New reception visit 5:00 to 6:00pm

24 Oct – Harvest Performance in Church

Rec & KS1 9:30 – 10:00am

KS2 10:15 – 10:45am

24 Oct – Last day of term 1

25 Oct – Inset Day



Term 2

4 Nov – First Day of Term 2

5 Nov – Remembrance Day

11 Nov – Learning Meetings Week – **no teacher led after**

school clubs will run this week due to Learning Meetings

14 – 20 Nov – Scholastic Book Fair

28 Nov – Parents workshop Maths (Dyson)

29 Nov – PTA Christmas Fair

5 Dec – Carols around the Christmas tree

10 Dec – Rec/KS1 Christmas Performance 9.15-10.30am

11 Dec – Rec/KS1 Christmas Performance 1.45-3.00pm

16 Dec – Rec Parents Christmas Lunch

17 Dec – KS1 Christmas Lunch

17 Dec – PTA Christmas Present Sale

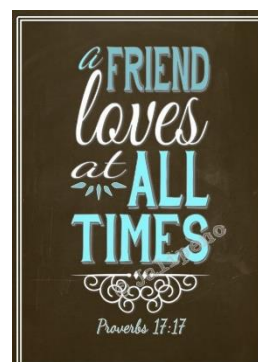
18 Dec – KS2 Christmas Lunch

20 Dec – Non Uniform day

20 Dec – Reception/KS1 Christmas Party 9.00-11.45am

20 Dec – KS2 Christmas Party 13.15-3.00pm

20 Dec – Last Day of Term 2



Follow us on Facebook to keep posted on all the exciting things we get up to at Pucklechurch!



Pucklechurch CEVC Primary School

PUCKLECHURCH NEWS

Issued weekly

Email: admin@pucklechurchprimary.org.uk

www.pucklechurchprimary.org.uk

18 October 2019

Issue 41

Reading

This week's results are:

Rowling SM- 73%
Rowling LS – 47%
Banksy RF – 47%
Banksy TP – 45%
Dyson AC – 41%
Dyson JC – 53%

Well done to Rowling SM for being this week's champions!



Times tables Rockstars

This week's Rockstars results are as follows:

Rowling SM - 1121
Rowling LS - 1387
Banksy RF - 564
Banksy TP - 1240
Dyson AC – 996
Dyson JC - 1374

Congratulations to Rowling LS on being this week's champions!



Learning Meetings

Learning meetings take place during the week of 11th November. Bookings will be open from 530pm on Wednesday 23rd October. The link to book is

<https://www.schoolinterviews.co.uk/code?z=8LVEMm>

Event Code: 9nvzq

All classes have more slots available than the number of children allocated to them but as you know, some times seem incredibly popular so please do book early to avoid disappointment.



Thank you to the following, who will all receive one of our Pucklechurch thank you certificates

Mrs Berry, Mrs Marshall and Mrs Gilmore for volunteering to come and tidy up our library. Thank you!

The ladies from the church who gave up their free time to come and judge childrens christmas card design. Thank you!



Follow us on Facebook to keep posted on all the exciting things we get up to at Pucklechurch!



PUCKLECHURCH NEWS

Issued weekly

Email: admin@pucklechurchprimary.org.uk

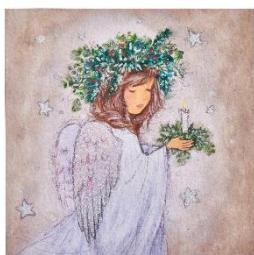
www.pucklechurchprimary.org.uk

18 October 2019

Issue 41

Christmas Card Design Winners!

Well done to the following children whose Christmas card design will be used for our community Christmas cards:



Esther

Poppy

Ellie-May

Amelia

Menu Change

On Thursday 24th October the kitchen will be offering fishfingers and chips or veggie nuggets instead of the scheduled chicken curry or vegetable/quorn lasagne.



School council

School council met having spoken to the rest of the school about activities that we should be undertaking. They would like to participate in the Christmas shoe box appeal this year. We will be sending out more details about what this entails but we would love a parent volunteer to work with us on this as a project. If you are available, please let Mrs Capel or the school office know. Thank you!

Zoo Lab



Further to our letter, we are very excited that as part of Anti-bullying week, we will be running a Zoo Lab

workshop on the **15th November 2019** for all children (this is also a non-uniform day).

This is a special event where Zoo Lab will bring animals into school to help explore relationships, social conflict, examine the issue of bullying and what can be done to help! We have managed to secure this external workshop at a reduced cost. Thank you so much to those of you who have already paid. Just a reminder if you haven't that we are asking for a voluntary contribution of £2.00 for each child. This is payable via ParentPay, at which time you will also need to give consent for your child to attend. We need to have all contributions in by Friday 25th October 2019 in order to confirm our booking. Please note that as the workshop is paid for in advance, we will not be able to return your contribution should your child be unable to attend due to absence or illness.

Priority Sports

Priority Sports will be offering Tag Rugby on a Friday after school 3.15-4.14pm for Years 1 - 6. Please sign up from next week on their website.

<https://www.prioritysports.co.uk/book/>

They will also be taking bookings for terms 3 and 4 for gymnastics and football clubs from the 4th November, so please do book in then.



https://www.prioritysports.co.uk/book/?fbclid=IwAR3wAetAoKtBj0PjrMwf_wO_WpSWToGwXOxJDJ2MULJ_qdSvFfdaBoLkDSWQ



Follow us on Facebook to keep posted on all the exciting things we get up to at Pucklechurch!



Pucklechurch CEVC Primary School

PUCKLECHURCH NEWS

Issued weekly

Email: admin@pucklechurchprimary.org.uk

www.pucklechurchprimary.org.uk

18 October 2019

Issue 41

Applying for a primary school place

Selecting the school you would prefer your child to attend is an important decision. Applications must be submitted by 15 January 2020

The information contained in the primary admission booklet and on this website is intended to help you in the initial stages of the application to primary school process.

<https://www.southglos.gov.uk/education-and-learning/schools-and-education/school-admissions/primary-school-admissions/>

The deadline for primary school place applications is 15 January



GOV.UK

Teacher led After School Clubs – W/C 11th November

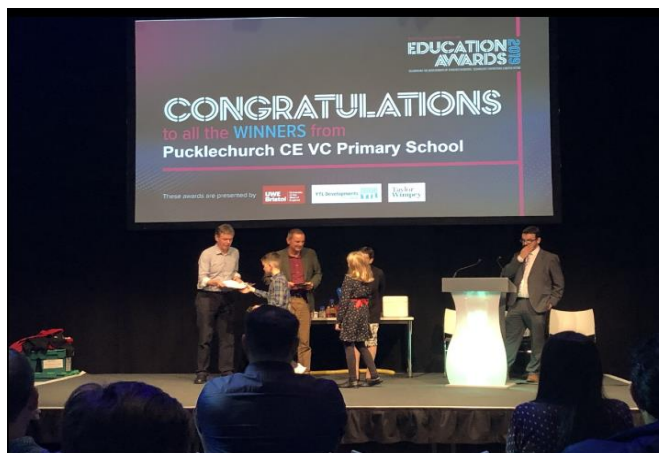


After School Clubs

During our Learning Meeting week there will be no teacher led After School Clubs. Mighty Oaks and externally led clubs will still take place as usual if they're scheduled to take place.

STEM Award

Two children from Year 6 received a very special award on Friday. Huge congratulations to Poppy and Ellis for receiving a STEM (Science, Technology, Engineering and Maths) award. It was awarded as a special recognition for their achievements in these areas. We were lucky to attend a very exciting evening held at the Aerospace museum.



Follow us on Facebook to keep posted on all the exciting things we get up to at Pucklechurch!



Pucklechurch CEVC Primary School

PUCKLECHURCH NEWS

Issued weekly

Email: admin@pucklechurchprimary.org.uk

www.pucklechurchprimary.org.uk

18 October 2019

Issue 41

Attendance



Attendance this week	
Aardman MH	97.52%
Aardman NM	98.56%
Rowling SM	98.48%
Rowling LS	98.40%
Banksy RF	97.13%
Banksy TP	97.78%
Dyson AC	97.78%
Dyson JC	96.21%
Whole School	97.74%

Remembrance workshop

We are excited to invite you into our whole school Remembrance workshop on Tuesday 5th November from 10-11am. This is a great opportunity to share some learning with your child and then share a minutes silence at 11am in the hall.

We hope to see lots of you at the workshop.



Follow us on Facebook to keep posted on all the exciting things we get up to at Pucklechurch!



Pucklechurch CEVC Primary School

PUCKLECHURCH NEWS

Issued weekly

Email: admin@pucklechurchprimary.org.uk

www.pucklechurchprimary.org.uk

18 October 2019

Issue 41

Library

Thank you to all of our volunteers for coming in and tidying up our library. As of next term our library will be open for you to come and visit each morning with your child from 8.30-8.45. You may wish to change your child's library books, choose some different books or even just come in and read a story! We look forward to sharing our library with you each morning from Term 2!



House Competitions

This week, Dyson took part in their termly inter-house PE competition. They completed hockey relays using the skills they have learnt across the term within their mixed Y5/6 house teams. They were challenged to completing as many runs as they could as a team in 5 minutes and the results are as follows:

Australia – 36 runs

China – 29 runs

USA – 37 runs

Brazil – 37 runs

Congratulations USA and Brazil on being joint winners!

Conkerama!

★ ★ You raised an amazing £367.15 ★ ★

Thank you all so much for supporting Conkerama - we hope you all enjoyed it!

A BIG thank you to everyone who helped with the making of apples and cakes before the event and a BIG thank you to everyone who helped out serving hot drinks, cakes and hotdogs Conkerama, running the games and helping all the children do the crafts! we couldn't do it without you all! Thanks also to those who made the fire for us and cooked the popcorn.

Well done from the school to the PTA for their amazing support, as always.



Follow us on Facebook to keep posted on all the exciting things we get up to at Pucklechurch!



Pucklechurch CEVC Primary School

PUCKLECHURCH NEWS

Issued weekly

Email: admin@pucklechurchprimary.org.uk

www.pucklechurchprimary.org.uk

18 October 2019

Issue 41

The STEM Factory @ Pucklechurch Primary School



What: Introduction to Robotics PT2,
5, 1hr sessions

When: Wednesdays, 15:10-16:10

Start date: 06/11/19

Who: Anyone in KS1

Price: £35



Learn more about the robot paradigm of Think, Sense & Act by investigating how multiple sense robots work. Design and build robots which can draw. How can you make your bot draw different shapes? Work together to complete shape and movement challenges with engineering constraints. Finally, design robots which go to sleep when it's dark and then come alive during the day.

STEM skills covered: Prototyping, Investigation,
Computational Thinking, Team working and Collaboration

For further information and to register your interest, visit:

thestemfactory.co.uk



Follow us on Facebook to keep posted on all the exciting things we get up to at Pucklechurch!